

# Vegetable Growing Contest

**Contest is Saturday,  
Aug. 28, 10am**  
Entries due by 8pm, Friday, Aug. 27

*Open to all ages  
No entry fee!*

**You grow it,  
You enter it!  
Fun, fun, fun!!**

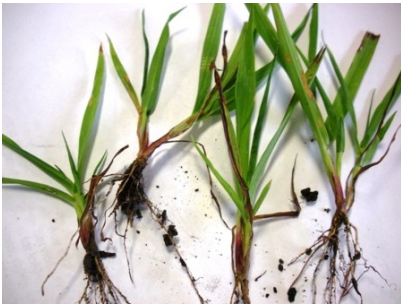
- Vegetable Oddities
- Largest Potato
- Largest Watermelon
- Largest Zucchini
- Faces in Vegetables

Minimum of 5 entries required in each category

*3 prize places in each category*  
1st Place - \$10 Drummers Gift Card  
2nd Place - \$5 Drummers Gift Card  
3rd Place - Drummers Gift Bag

## It's not crabgrass but I still don't like it!

Have you noticed unusual grass growing in your lawn this year?



Here's one example, tall fescue. A customer brought in a clump for identification this week and complained that it is bright green and clumps of it look awful in her lawn.

Fescues are a component in some seed mixtures for northern lawns, conditions in recent seasons have led to helping the fescues establish themselves. If they bother you, then focus on growing healthy Kentucky Bluegrass; another component of northern lawns.

To do that you can weed out the fescue and replant. The good news is that Aug. 15 to Sept. 15 is the best time of the entire year to seed grass. Or you could patch in sod.

Also use good cultural practices. Mow your turf long in mid-summer when temperatures rise. This will help shade out weeds and keep the bluegrass cooler plus make the fescue a little less noticeable. For the last mowing in the fall, cut it very short.

If you fertilize, fall is a great time to do so. Also, keep your mower blade sharp so it slices the blades of grass rather than chewing them. This can invite disease into turf. The photo at right is an example of a dull mower blade. Notice the ragged edge and damage to the grass blade.



## Scenes from our gardens this week



Helenium in our sun border....

Choose from varieties 'Sahins Early Flowerer', 'Rubinzweg', 'Mardi Gras' and 'Ruby Tuesday'

Helenium flowers through late summer giving the border height and color from yellow to orange and red.



Helenium combined in the border with Hemerocallis 'Pardon Me'



Potentilla blossoms wet with dew.



Potentilla in front of the shrub border blooms all summer long.

**Thanks for coming!**

Many thanks to all of you for coming to our Growing Rewards Garden Party and for your patience during our busy party. We hope you all had a great time and found some bargains. We took notes and plan to improve things for next year!

Check out photos of the event (and more) on our facebook page.

Congratulations to our prize winners.



Jim Marble - \$35 floral gift certificate

Mary Jost - Butterfly Bird Bath

Jim O'Laughlin - succulent garden

Kathy Blank - Hand tools & tool hip holster

Roger Burgina - Flashlight & tool kit

Mike Rathman - Famous Daves BBQ gift pack

Carol Honeman - Seashell Bird Bath

Dale Zenk - Renaissance Festival Tickets

Georgia Pederson - Renaissance Festival Tickets

## Consider the value of landscape plants

When the budget is tight sometimes one may wonder why to spend money on things like petunias and barberry bushes. The truth of the matter is that you're investing in the overall value of your landscape; that's value in real dollars, function and aesthetics. Plants are a necessity.

Consider the value from grass (above), flowers, trees, and shrubs (below). Not only do they provide shade which reduces the cost of cooling, but they can also reduce the cost of heating too. These plants stabilize the soil and filter stormwater runoff. [These ideas are summarized by Virginia Cooperative Extension.](#)

Aesthetically, plants attract wildlife like butterflies and songbirds while also producing oxygen and removing carbon dioxide from the atmosphere. This is not to mention the value of plants on your sanity. They help us relax after a stressful work day. They also provide beauty inside and outside the home, provide food and baffle sound.

Landscaping doesn't have to be done by professionals and there is so much you can do on your own. From planting a few annuals in a pot to planting trees, you want what you purchase to be sustainable and doable. Get tips on design and plant choice from the University of Minnesota's [Sustainable Urban Landscape Information Series.](#)

## Fruits, Trees & Perennials on sale

- Grapes, raspberries, vines & perennials are 33% off
- Apples & blueberries are 40% off
- Shade trees are 25% off
- 5 mini Gerbera Daisies for \$5.99

Clearance section in the store

## Spend your points now

Growing Rewards Members...

You can spend the points you've accumulated over the year (or years) now through Oct. 31.

Each point is worth 2 cents. Points cannot be applied toward sales tax or gift cards but they work on most everything else!

We keep track of your points in our computer system so just ask to use them when you make a purchase. To determine how many points you have just ask a cashier or check your last receipt.

## Tiger Eyes Regeneration

Our Tiger Eyes Sumac (*Rhus typhina* 'Tigereye Baitiger') suffered the defeat of rabbit damage last winter (below, look at the snow!) as it grows unprotected in our shrub border. But, it has grown new stems from the crown and is in it's full glory this summer (right).

